

An abstract graphic featuring several large, faceted, teardrop-shaped elements in vibrant colors like yellow, orange, pink, blue, and green, set against a dark, gradient background. The shapes are composed of multiple overlapping, semi-transparent facets, creating a crystalline or gemstone-like appearance.

Shared Database and Remote Grading

13

Shared Database and Remote Grading

Using the Shared Database	738
Using the Shared Databases	738
The Database Manager	741
Requirements	745
Setup	745
Setting Up Remote Grading	745
Restrictions	746

Using the Shared Database

Using the Shared Databases

Even though DaVinci Resolve now works on an individual project basis by default, many users may prefer the previously standard method of database project management. For those users, this can be easily enabled. Resolve works from an internal database server, so it's possible to create multiple databases for maximum flexibility in organizing your projects. For example, you might create a database for each year, for each month, for each multi-episode series you work on, or any other organizational criteria that makes sense for the kinds of projects on which you work. Furthermore, facilities with multiple Resolve systems can implement a shared Remote Database Server.

Tip: However you elect to organize your databases, keep in mind that smaller databases with less project data load and save faster.

If you're upgrading from a previous version of DaVinci Resolve, you'll already be working in database mode since that was the only method of working previously. As usual, you'll be prompted to upgrade your previous database when you open Resolve.

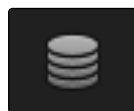
In either case, this section covers how to go back and forth between database management, and independent project management.

Switching to Database Management

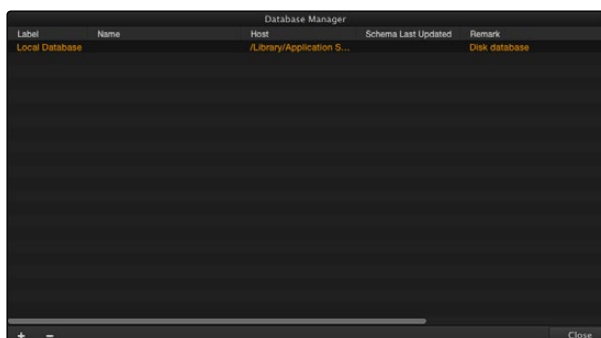
To switch to database project management, you need to open the Database Manager and create a new database for Resolve to use.

To switch to database management:

1. If necessary, click the Back to Log In button to return to the Login screen.



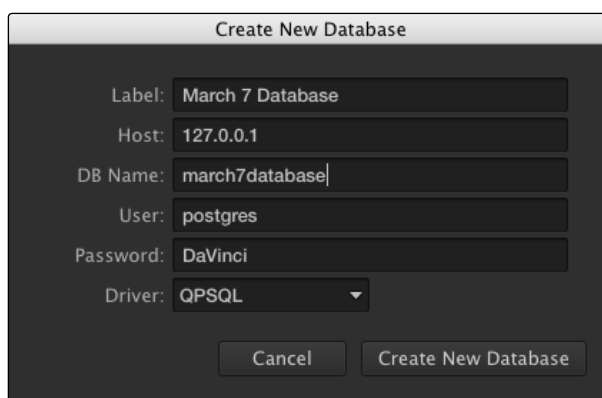
Database Manager button



Database Manager window

The Database Manager appears.

2. Click Create New (the Plus button).
3. In the “Create a New Database” dialog that appears, make the following changes:



The screenshot shows a dialog box titled "Create New Database". It contains the following fields and values:

- Label: March 7 Database
- Host: 127.0.0.1
- DB Name: march7database
- User: postgres
- Password: DaVinci
- Driver: QPSQL (selected from a dropdown menu)

At the bottom of the dialog are two buttons: "Cancel" and "Create New Database".

Creating a new database

- Type a name for the database into the Label field. This is the name you’ll see, so choose something readable and clear, but avoid using special characters.
 - Type an abbreviated, lower caps version of this name into the DB Name field. This name must be unique to the other databases currently in the list, but you cannot use spaces or special characters in this field.
 - Make sure the Driver pop-up menu is set to QPSQL. This guarantees that you’re creating a database, and not a directory reference for project-based management.
4. Click OK to create the database, and click OK when you’re prompted that the database has been created successfully.
 5. To begin using that database, select it in the list, and click Select.

DaVinci Resolve will now save projects into that database.

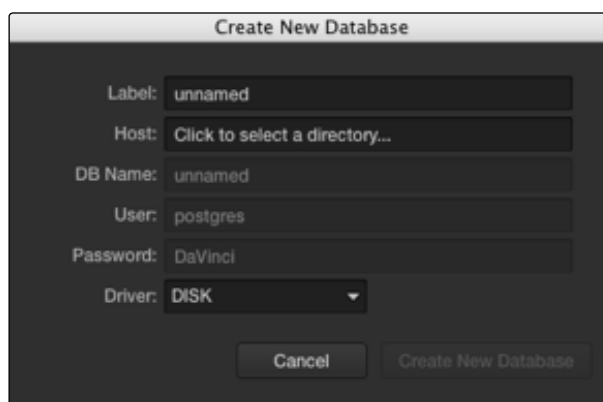
To Switch to Project-Based Management

If you're already using databases, and you'd like to switch to the simpler project-based approach, this is also easy to do using the Database Manager, but you'll be creating a different kind of item in the list. This is also the way you choose which directory Resolve uses to save the projects created by a particular User.

Note: Linux systems can only use an SQL database, while OS X and Windows systems can use either a database or project-based management.

To switch to project-based management:

1. If necessary, click the Back to Log In button to return to the Login screen.
2. Click the Database button at the bottom right of the Login screen to open the Database Manager window.
3. Click Create New (the Plus button).
4. In the "Create a New Database" dialog that appears, make the following changes:



Dialog for creating a new database

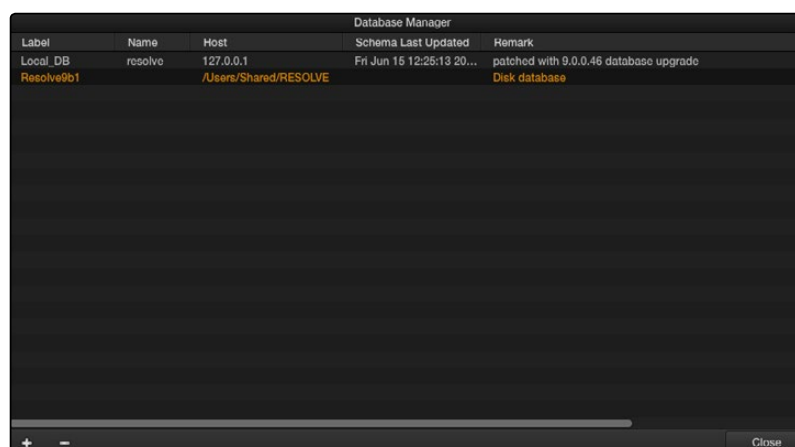
- Choose DISK from the Driver pop-up menu. This disables most of the fields that are available.
 - Click the Host field, then choose a location and create a directory using the File Browser dialog that appears. When you're ready, select the directory you want to use, and then click Choose.
 - Type a name into the Label field so you can identify this disk location.
5. Click OK.
 6. To begin using that Disk database, select it in the list, and click Select.

DaVinci Resolve will now save projects directly to that disk directory.

The Database Manager

The Database Manager is where all databases are managed, whether they're traditional SQL-based databases, or Disk databases that allow direct project-based management.

While there's a lot of project management you can do from the Project Manager, if you're using databases, the Database Manager is critical for providing the interface to upgrade, create, backup, restore, and select databases on your system.



Database Manager window

What's in a Database?

To provide a better understanding of why databases are useful, it helps to know how data is managed within each database. The following is the hierarchy of information that's stored within each database:

Database > Users > Projects > Timelines > Clips > Timecode > Versions > PTZR/Grade

In plain English, each database is organized into a number of users. Each user is a container that holds one or more projects that are unique to that user. Each project contains one or more timelines, and each timeline contains one or more clips. Each clip contains a range of timecode and a reel, each of which points to three independent sets of adjustment data: Source settings (such as R3D or ALEXA metadata), and versions that contain pan/tilt/zoom/rotate/3D (PTZR) settings, and grades, which are applied to each clip in that order.

Where Are My Disk Databases, Anyway?

In the exceptionally rare instance that your system administrator needs to know where your DaVinci Resolve database is located, due to some catastrophic occurrence, every database that Resolve creates is located within a file hidden deep within your system with a location determined by the operating system you're using:

On OS X:

Library/Application Support/Blackmagic Design/DaVinci Resolve/ Resolve Disk Database

On Windows:

C:\ProgramData\Blackmagic Design\DaVinci Resolve\Support\Resolve Disk Database

This is primarily useful to know if only to demonstrate the importance of backing up your entire system to make sure this critical file is preserved. Do not, under any circumstances, remove, rename, or attempt to edit this file. The consequence of failure is the loss of all your database-managed project information.

Database Management

Here's a breakdown of all the commands that are available for managing the databases used by Resolve. The Create Database (+) and Delete Database (-) buttons are located at the bottom left of the Database Manager; all other commands are available from the Options pop-up menu at the upper right corner.

Methods of database management:

- **New Database:** Click Create New to add a new database to the Database list. See the previous section for more information on how to do this.
- **Delete Database:** Select a database and click this button to delete it, along with all users and projects inside of it. It's highly recommended to back up databases you're about to delete in case you later decide you need to retrieve their contents.
- **Select:** To choose a new active working database, click on a database from the list and click Select. This database will now be used for saving all new projects. Other Internal, Remote, and Disk databases will continue to appear in this list, and you can import projects from those databases using the Group Projects browser in the Project Manager. However, whenever you save a project, regardless of its origin, it will be written to the active working database selected here.

-
- **Restore:** If you have previously backed up a database, or have one from another system you can restore this database over the original or create a new empty database to restore to. Select the destination database and then click "Restore." Navigate using the open Finder to the database you wish to restore and select "Open." You then need to confirm to overwrite the database you selected as the destination and the database will be restored.
 - **Backup:** You back up databases like any other file. This provides added protection should your system drive fail, or a backup can be used to move multiple projects between systems. Selecting 'Backup' will open the Finder window and you can define the file name and location to back up. Be sure not to change the .backup extension.
 - **Optimize:** If the database in Resolve becomes so large that it affects performance, you may need to optimize it to improve access speed. Click "Optimize" and the database will be vacuumed of unnecessary spaces and reindexed.
 - **Upgrade:** If you have databases that were created using previous versions of DaVinci Resolve, they probably need to be upgraded to be accessible. It's generally a good idea to back up any database you're planning to upgrade, in case something goes wrong.
 - **Connect:** If you are connecting to a Remote Database Server, click Connect, change the IP address in the Host field from the local computer's address, which is shown as the default, to the IP address of the computer you've set up as the Remote Database Server. Type the remote database's name into the DB Name field. Accept the default "postgres" entry in the User field for all new databases with full read/write access, or change this to "MySQL" for read-only access to legacy DaVinci databases. For more information on Remote Database Servers, see the next section of this chapter.
 - **Disconnect:** Disconnects from a Remote Database Server to which you've previously connected.

About Locked Projects

Large projects being worked on in parallel are often split into sections, so multiple colorists can work simultaneously in different suites. For example, a feature film may be split into reels, or the film separated from the trailer and video press kit. Each section can use grades from the other segments as required to keep the shots balanced.

If you are sharing a database in this way with other DaVinci Resolve systems, some of the projects will have a Lock icon to the left of the project name. When a shared project is loaded, it is automatically locked in Read-only mode to prevent multiple users from accessing the project at the same time. If you load a locked project and make changes anyway, you'll need to save a new project file using a new name to preserve your work.

To unlock a project:

→ Log in as Admin, and then click the Unlock button.

Using a Remote Database Server

Multiple DaVinci Resolve systems can also work on the same project at the same time using a shared database. For example, an assistant could be working with the colorist to prepare files for the next reel by conforming shots, managing VFX replacements, doing dust busting repairs, and so on. Using a Remote Database Server, Resolve automatically prevents two users from working on the same project by creating a copy of a project that's already in use, and will advise you of when the other project is closed.

We highly recommend the use of a separate workstation to operate as the Remote Database Server for facilities with more than two DaVinci Resolve systems. By clicking the Connect button in the Database Manager, you can enter the information that enables a connection to the remote database. See the previous section for more information.

Setting Up Remote Grading

To enable colorists to work interactively with clients across the globe, DaVinci Resolve offers a remote grading option. It allows two matching DaVinci Resolve systems to be synchronized via an Internet connection such that changes made on the colorist's workstation are immediately applied on the client's workstation.

Cue commands are also synchronized to ensure that both systems are always on the same frame in the Timeline. Starting or stopping playback on the colorist's DaVinci Resolve also starts and stops the client system. While a remote grading session is in progress, all input from the user at the client's DaVinci Resolve workstation are ignored.

Currently, the remote grading feature supports only color correction and does not allow editing or conforming during a session. The two DaVinci Resolve systems must have matching timelines and the number of clips, clip durations and system resolutions must match. The requirements and limitations of a remote grading session are summarized below.

Requirements

The following requirements must be met for remote grading to work.

- The same software version of DaVinci Resolve must be installed on both systems.
- The display resolution must be the same on both systems.
- The timeline to be graded must be conformed prior to the start of the remote grading session.
- The number of clips and the duration of each clip must be identical.
- During grading, the active timeline and versions on the client system are constantly updated. Creating, deleting, or switching the timeline on the client's DaVinci Resolve is not allowed. Doing so will terminate the remote grading session immediately.
- You cannot make any grading adjustments on the client's DaVinci Resolve workstation until the remote grading session has ended.

Setup

To start a remote grading session, the client's DaVinci Resolve must be able to connect to the colorist's system using TCP/IP.

1. Open DaVinci Resolve on the client's workstation, log in, open the project being remotely graded.
2. Choose View > Remote Grading (Ctrl-G). A window is displayed with text fields to enter the IP address and port number of the colorist's remote system.

3. Set the IP address field to the IP of the colorist's DaVinci Resolve. If the colorist's system is on a public IP, the port number can be left at the default value (15000). If the colorist's system is on a private network, the port number should be set to the port on the public IP that is internally routed to port 15000 of the colorist's DaVinci Resolve.
4. Once the client clicks Connect, the client's DaVinci Resolve system will try to establish a connection with the remote colorist's workstation.
5. Once the connection is established, a pop-up appears on the colorist's screen asking for permission to accept a Remote Grading connection.
6. Click OK to accept, minimize the size of the dialog window, and continue grading normally.

The Remote Grading session will remain active until one of the users chooses to disconnect or an error occurs causing DaVinci Resolve to automatically terminate the session.

Restrictions

To allow operation over low bandwidth and a potentially long latency Internet connection there are some restrictions to remote operation.

- When playback is started, the playback speeds on the two DaVinci Resolve systems may differ. The frame positions will only be synchronized when playback is stopped.
- Input/output/display LUTs applied from the Config page on the colorist's DaVinci Resolve will not have any effect on the client system. LUTs selected on the client's DaVinci Resolve will be applied instead.
- Presets applied from the Config/Color pages on the colorist's system will not have any effect on the client's system. Presets selected on the client's DaVinci Resolve will be applied instead.